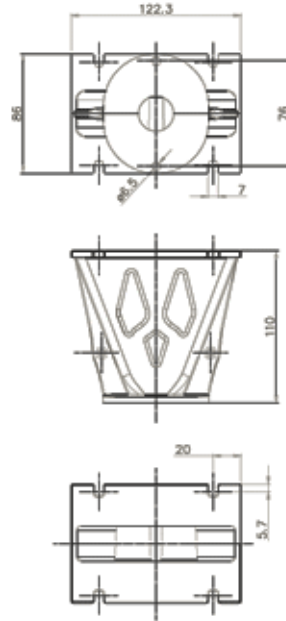
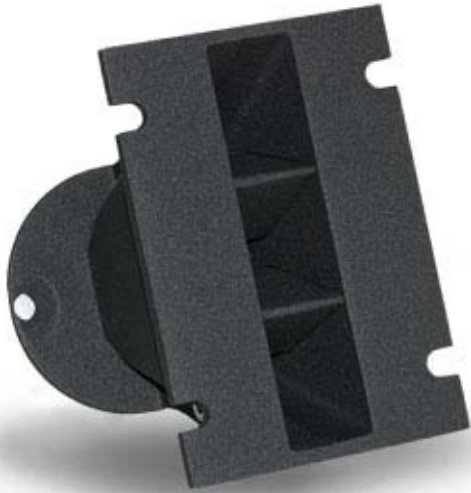




WG101 HF Horns



NOMINAL SPECIFICATIONS

Throat Diameter	25.4 mm (1 in)
Frequency Range	1+20 kHz
Reccomended Crossover Frequency (1)	1.6 kHz
Horizontal Nominal Coverage (-6dB) (2)	140°
Mouth Height	122.3 mm (4.81 in)
Mouth Width	86 mm (3.39 in)
Depth	110 mm (4.33 in)
Mouth Mounting Holes (4x)	6.5 mm (0.26 in)
Net Weight	0.48 Kg (1.06 lb)
Shipping Weight	0.50 Kg (1.10 in)
Shipping Box	150x123x102 mm (5.91x4.84x4.02 in)
Material	Al

ORDERING CODES

Ordering Code	TR992541
---------------	----------

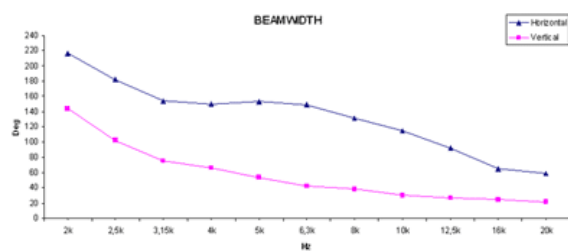
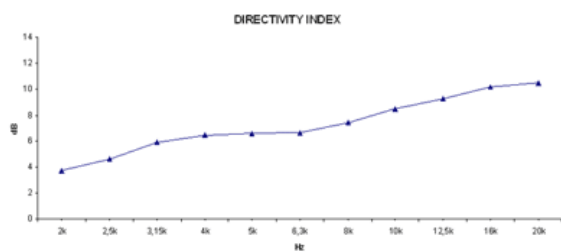
NOTES

() Sold only in combination with a FaitalPRO 1" HF Driver

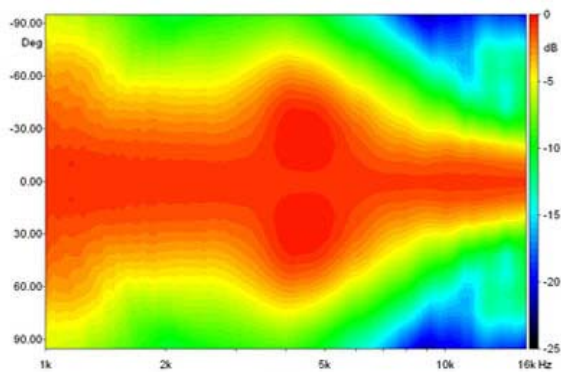
(1) 4π sr acoustic loading

(2) Average value in frequency range: 2+16 KHz

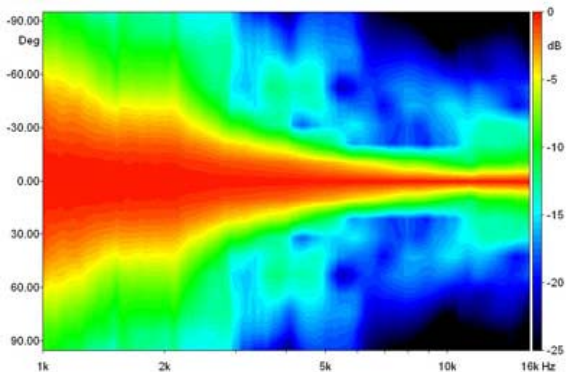
CURVES



BEAMWIDTH

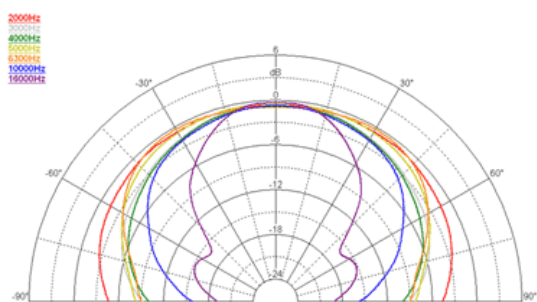


Horizontal Beamwidth

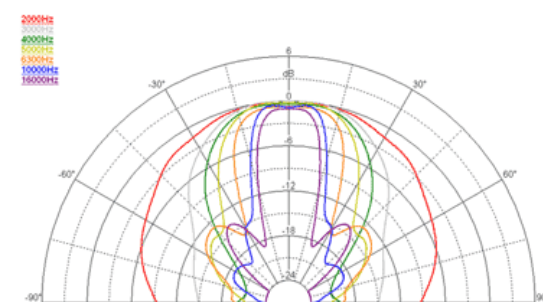


Vertical Beamwidth

POLAR PATTERN



Horizontal Polar Pattern



Vertical Polar Pattern